

CASA MAYA KAAAN

DOOR TO THE SKY



SIAN KAAAN RESERVE TULUM MEXICO



WELCOME TO CASA MAYA KAAK
Maximum capacity for sleeping is 40 people



INDOORS



Living room



Living room - Tv area



Table seats 18 people



Kitchen

BEDROOMS



Tortuga Suite with Ocean View



Canopy Suite with Jungle View

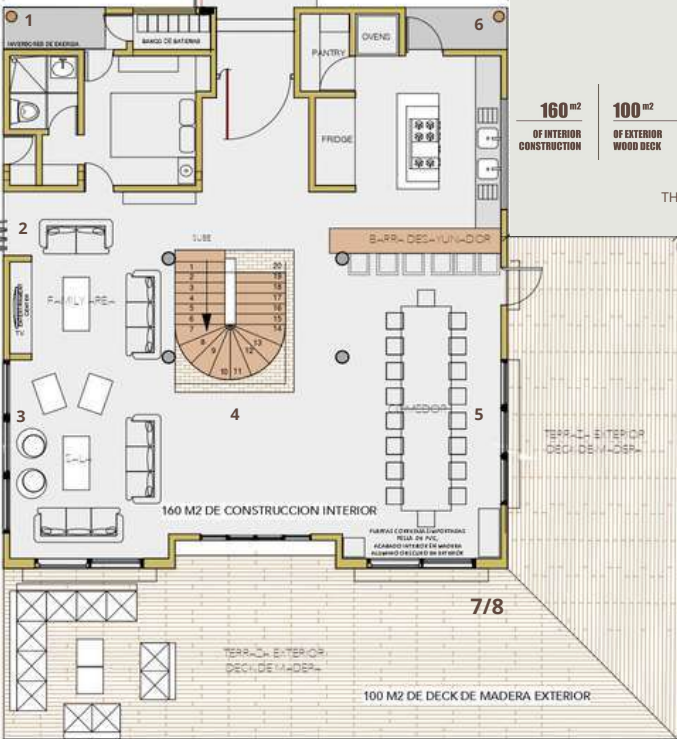


Tucàn Suite with Jungle View



Seashell Deluxe Room with Independent Entrance

LOW LEVEL



THE SEASHELL DELUXE ROOM WITH INDEPENDENT ENTRANCE



TV AREA



RELAX AREA



RELAX AREA WITH EXIT TO THE TERRACE AND OCEAN VIEW



DINNER AREA



KITCHEN / PANTRY ROOM



TERRACE WITH MAXI SOFA FOR 18 PEOPLE

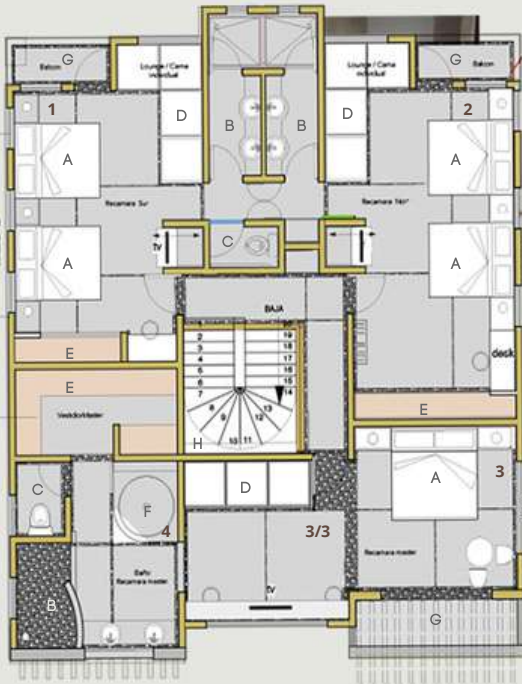


TERRACE FOR DINNERS UP TO 100 PEOPLE
OR YOGA CLASSES UP TO 40 PEOPLE

TOP FLOOR

152 m²
OF INTERIOR
CONSTRUCTION

10 m²
OF EXTERIOR
BALCONY



1



THE TUCAN SUITE WITH JUNGLE VIEW

2



THE CANOPY SUITE WITH JUNGLE VIEW

D



TOTAL 5 SINGLE SOFA / BADS

3



THE TORTUGA SUITE WITH OCEAN VIEW

4



BATHTUB

3/3



THE TORTUGA SUITE WITH OCEAN VIEW

- A - 5 DOUBLE BEDS

- B - 3 SHOWERS

- C - 2 WC

- D - 5 SINGLE SOFA/BEDS

- E - 3 WARDROBES

- F - 1 BATHTUB

- G - 3 BALCONIES

- H - ACCESS SCALE



BELL TENTS

.....

DELUXE DÉPENDANCES

The Bell Tents of 4 and 5 square meters, with the possibility of a queen bed or two single beds, electricity and furniture, each bell tent can accommodate 2 people.

Total Bell Tents: 9.

Total capacity of Bell Tents: 18 people.

The Bell Tents are built only on customer's request.

The price of 1 Bell Tent: from 150,00 USD to 250,00 USD per night

+ 16% Tax (tax is not included in the price).

+ 3% Service Fee (service fee is not included in the price).



VILLA MAP



BELL TENTS



TEMAZCAL



BUNGALOWS



BEACH CHILL-OUT AREAS

- 3 SHOWERS
- 2 WC
- 2 FIRE PLACES
- 1 TEMAZCAL FOR 30 PEOPLE
- 4 OPEN BUNGALOWS
- 16 BELL TENTS

CASA MAYA KAAAN
CAMP



OUTDOORS



OUTDOORS





HOUSE STAFF

THE HOUSE STAFF FEELS LIKE FAMILY. THEY ARE GENUINE AND MODEST PEOPLE. THEY WILL BE ABOVE AND BEYOND TO MAKE YOUR STAY THE MOST MEMORABLE!



CHEF

QUALIFIED PERSONNEL CHEF
AVAILABLE AND SPECIALIZED IN
FRESH HEALTHY LOCAL FOOD.

OUR FOOD IS A KEY EXPERIENCE
AT CASA MAYA KAN.

THE CREATIVE MENU FEATURES
FRESH QUALITY LOCAL
INGREDIENTS. NATURAL
PRODUCE FROM LAND AND SEA
IS GROWN OR SOURCED FROM
LOCAL SUPPLIERS, AND HERBS
AND VEGETABLES ARE COOKED
IN A WAY THAT ENSURES THEIR
HEALTH BENEFITS.



SERVICES

INCLUDED IN THE PRICE

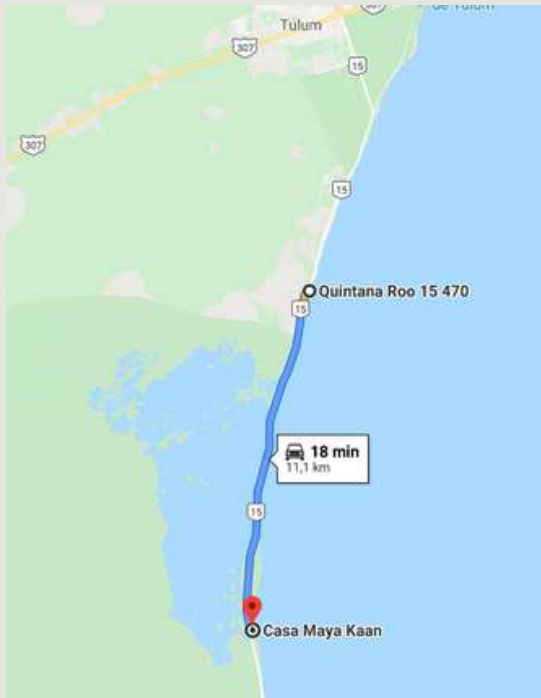
- WELCOME COCKTAIL IN THE LAGOON SUNSET TIME
- WATER, COFFEE AND TEA
- BREAKFAST
- DAILY CLEANING SERVICE
- WIFI
- PRIVATE BEACH WITH 3 CHILL-OUT AREAS
- 2 KAYAKS
- 1 PADDLEBOARDS
- SNORKELING EQUIPMENT
- CRIB
- THE HOUSE IS FULLY FURNISHED



SERVICES

NOT INCLUDED IN THE PRICE

- TEMAZCAL
- YOGA CLASSES
- HOLISTIC MESSAGES
- SPA TREATMENT
- TOUR CASA MAYA KAAAN
- AIRPORT SHUTTLE
- TRANSPORT SERVICE
- BABYSITTER
- MEALS
- BEVERAGES
- PRE-STOCKING
- SIAN KA'AN PASS 36 MXN per person per day, to be paid at the entrance of Sian Ka'an.



WHERE WE ARE

SIAN KA'AN

Is a must for nature lovers. Ride a boat through the lagoon of Boca Paila for opportunities to spot wild life. Or take a snorkeling tour on the world's second-largest barrier reef, home to more than 500 species of fish as well as dolphins and marine turtles.

Casa Maya Kaan, being located in the private park of Sian Ka'an, is a very safe place. To enter into Sian Ka'an, guests are required to pay for a natural reserve pass which goes towards protecting the biosphere. This pass is 36 MXN (it's about 2 USD) per person per day. Please be sure to have pesos on hand or entry will not be permitted by the Rangers.

HOW TO GET TO CMK



1) You need to go to the entrance of the biosphere of Sian Kaan, located at the end of the paved road just after the famous hotels of Be Tulum & Nomad.

It is important to know that in the biosphere, you will not have signal, so you need to follow the instruction closely.



2) At the entrance of the biosphere (where the dirt road starts) you will have to pass a security fence where a guard will normally ask you where you are going? (Answer: Casa Maya Kaan) and who is the owner? (Answer: Peter Pan).

Here you need to prepare 36 MXN (it is about 2 USD). Each person has to pay for the park entrance for each day of the stay.

3) Now you are entering in our wild and magical nature. You are in a patrimoine of UNESCO where you will have to drive slow because of the roads. If you rent a car, we advise a 4x4. The time from the beginning of the dirt road to Casa Maya Kaan is more or less of ... (depending on the speed) and it represents 10Km. You will most likely be driving at 15km/h, and you can look at what km you started the dirt road to be able to have an idea of how far you are from destination.

4) Just before arriving to Casa Maya Kaan, you will see the carte "WILDLIFE CROSSING". After a few minutes you will see on the left side, cartel 9.900km, and after a few meters, you will see CASA MAYA KAAAN.



ADDRESS: Carretera Tulum-Boca paila, Reserva de la Biosfera de Sian Kaan, 77760 Tulum, Q.R., Mexico

REST, CONNECT, ENLIGHTEN





Contact Us

www.casamayakaan.com
info@casamayakaan.com

Carretera Tulum - Boca Paila
Km.22, 77780 Tulum, Mexico.